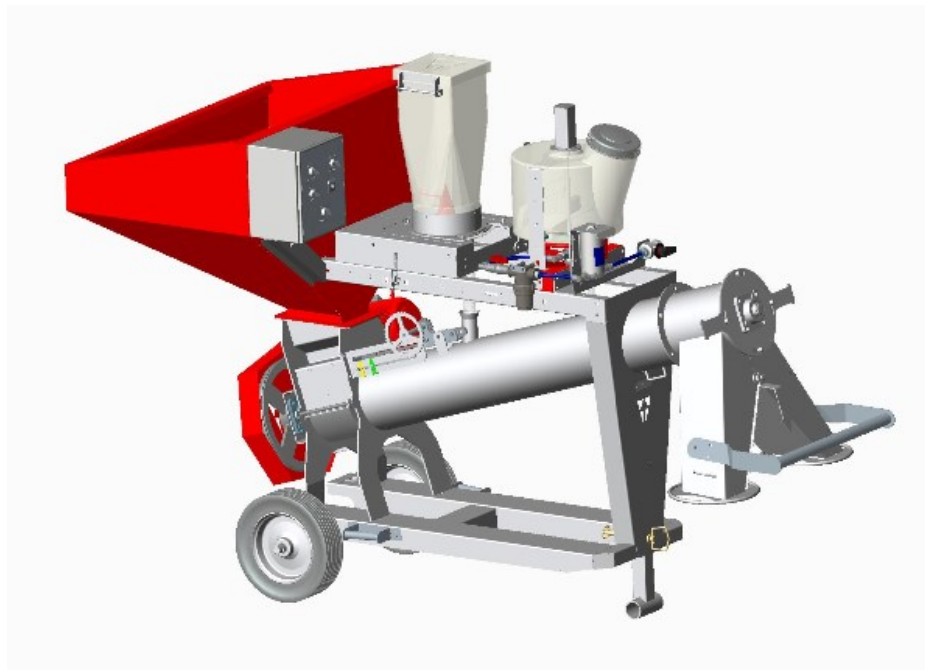


AgriCAD ST301



Owners Manual

Introduction

1. Foreword

Before operating the implement, read and strictly comply with the operating instructions. In doing so, you will avoid accidents, reduce repair costs and downtime and increase the reliability and service life of your machine. Pay attention to the safety instructions! AgriCAD will not assume liability for any damage or malfunctions resulting from failure to comply with the operating instructions.

These operating instructions will assist you in getting to know your implement and in using it correctly for its intended purposes. The operating instructions must be read and strictly adhered to by all persons working on or with the implement.

e.g. Operation (including preparation, fault rectification during work and servicing)

Maintenance (maintenance and inspection)

Transport

We reserve the right to alter illustrations as well as technical data and weights contained in these operating instructions for the purpose of improving the implement without notice.

2. Warranty claims

One year warranty on all implements

no warranty on wear parts

3. Intended use

The implement was built in accordance with latest technical standards and generally accepted safety regulations. However, risks of injury to the operator or third parties and impairment of the implement or other tangible assets can occur during use.

The implement must only be operated for its intended use if in a technically good condition, whilst being aware of safety and risks and in strict compliance with the operating instructions!

Faults, particularly those which impair safety, must be remedied immediately. The implement must only be operated, serviced and repaired by persons who are familiar with it and have been made aware of the dangers involved.

Genuine spare parts and accessories from AgriCAD are available for this implement. Spare parts and accessories which are not supplied by AgriCAD, have not been tested or approved by AgriCAD. Installation or use of non-original AgriCAD products may have a detrimental effect on specific design features of the implement and impair the safety of implement operators and the implement itself. AgriCAD will not assume liability whatsoever for damage resulting from the use of non-original parts and accessories.

The implement was designed for the treatment of seed in a agricultural application. Any other use beyond this limits, e.g. as a means of transport, is deemed improper.

AgriCAD will not assume liability whatsoever for damage resulting from unintended use. The risk will be borne solely by the user.

Intended use also includes the strict compliance with the operating instructions specified by the AgriCAD.

3.1 Consequential damage

The Implement has been manufactured by AgriCAD with great care. Nevertheless, even when used properly, malfunctions or complete failure may be caused by e.g.:

Blockage or seed bridging (i.e. caused by foreign bodies or moist seed)

Excessive wear due to the failing of a wear part. (i.e. Damage on auger resulting from bearing failure)

Damage caused by external influences.

Incorrect or inappropriate drive speeds

Incorrect operation of the machine.

You should therefore check the correct function of your machine before and during each use.
Liability for consequential damages caused by operating faults is excluded.

3.2 Authorised operators

Operators must be at least 16 years of age.

The operator is responsible for third parties in the operating area.

Only those persons who have been authorised and instructed by the owner may operate the implement.

The owner must:

Make the operating instructions available to the operator.

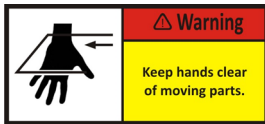
Ensure that the operator understood the operating instructions.

The operating instructions are a integral part of the implement.

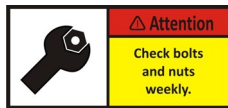
Safety and accident prevention

The following warnings and safety instructions apply to all sections in these operating instructions.

Safety symbols



Operational Symbols



Operational safety

The machine registration form has to be completed and returned to AgriCAD.

All protective features and safety equipment, such as detachable protective devices, must be correctly in place and reliably functioning before the machine is put into operation.

Check and tighten nuts and bolts at regular intervals.

In case of malfunctions immediately stop and secure the machine.

Service and maintenance

Ensure that regular inspections are always carried out.

Prior to performing maintenance and servicing work, ensure that the implement is positioned on firm, level ground.

Do not clean the implement with high pressure cleaning equipment.

Do not aim water directly at electrical or electronic components.

Prior to working on the electrical system, disconnect it from the electric power supply.

Re-tighten screwed connections which have been loosened during servicing and maintenance work.

In operation

Do not remove any of the mandatory and supplied protective devices.

Use access steps and treads only at standstill.

Passengers are not allowed to ride on the machine during operation!

Technical data—ST300

Dimensions and weights

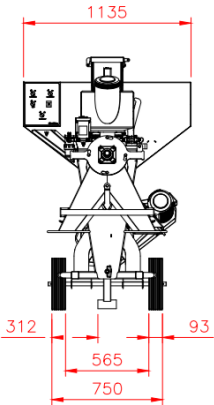
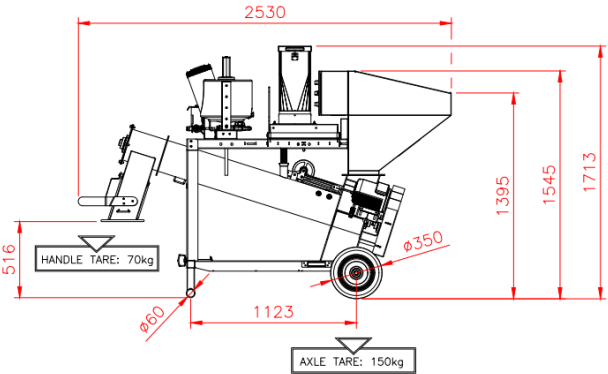
Width:1.130 m
Seed Intake Bin height:1.390 m
Auger Unload Height:0.515 m
Length:2.520 m
Tare:150 kg
Handle Weight:70 kg
Unit Mass:264kg

Standard design

Flow rate:Min 50kg/min, Max 200kg/min.
Liquid treater:1 x LE025 12V 25l (2 x Optional)
Powder treater:1 x DE020 12V 20l
Flights:AgriCAD NylaCup
Power Supply:230V
Flow Control:Elect. Controller & Mech. Sluice
Auger SpeedVariable (Electronic)
Dabble outlet:Yes
Powder treater:x 1 - 20 Litre
Powder: min 100g/min, max 2400g/min.
Granule: min 30g/min, max 900g/min.
Liquid treater:x 1 - 25 Litre (2 x Optional)
: @20°C with 1mPa.s viscosity (water)
min - 4ml, max 4500ml/min.
: @20°C with 700mPa.s viscosity (SAE 9 Min - 350ml, max 260ml/min.

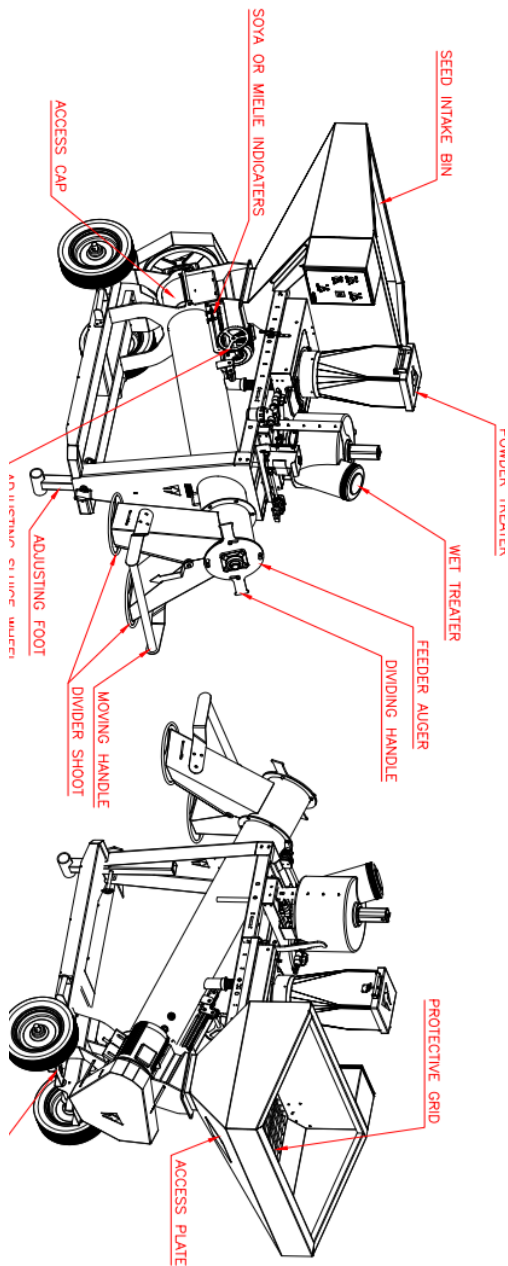
UNIT MASS: 260kg
BIN VOLUME: 200L
POWER SUPPLY: 230 V
SEED FLOWRATE : Min. 50kg/min, Max 200kg/min
FLOW CONTROL : Elect. controller & Mech. Sluice
DOUBLE OUTLET: Left, Right toggle
DRY TREATER: x1 - 20 Litre
: Powder min. 100g/min, max. 2400g/min
: Granule: min. 30g/min, max. 900g/min
LIQUID TREATER: x1 - 25 Liter
: @20°C With 1mPa.s viscosity (water)
: min. 4ml/min , max. 4500ml/min
: @20°C With 700mPa.s viscosity (SAE 90)
: min. 350ml/min , max. 2600ml/min

ST301



This page was left blank intentionally.

Operating instructions

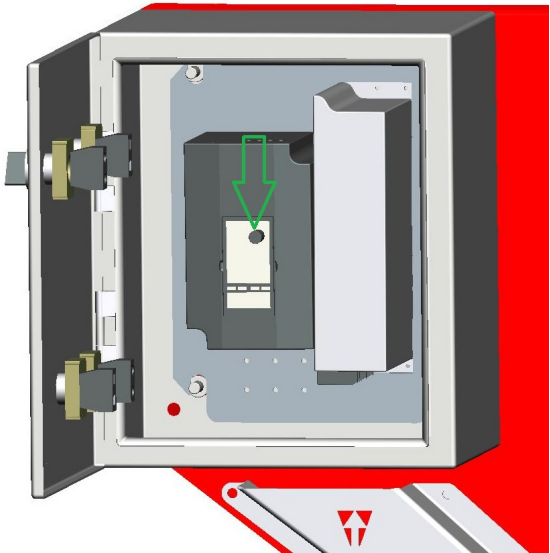
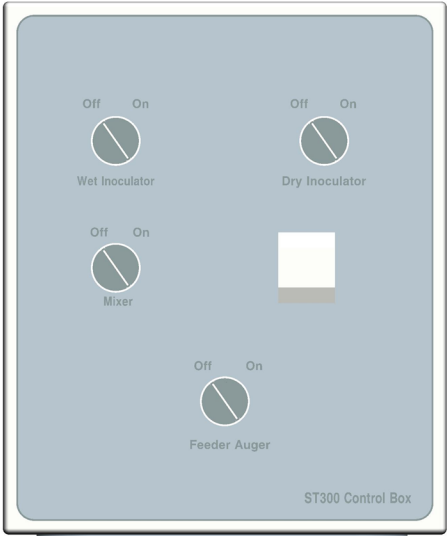


Control unit

Attention!

Make sure no unauthorised person is close to the ST300 when activating the controls.

Layout of Control unit.



Adjusting discharge rate of seed

Adjusting the feeder auger speed

The rate of seed discharge from the feeder auger can be adjusted by means of the following:

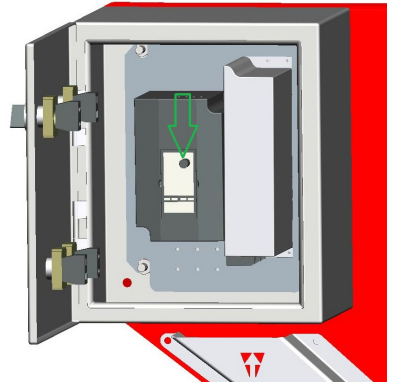
By adjusting the auger speed.

Unlock & Open the control box.

Find black control unit, adjust speed by turning the knob.

When the knob is turned, the speed will alter and will stay at the set level.

After setting at the calibrated speed close and lock the control box.

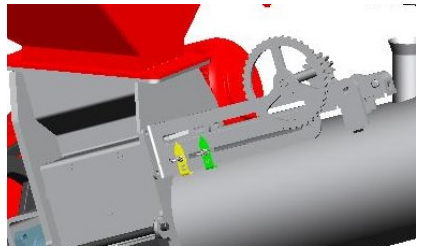


Adjusting the sluice

By adjusting the feeder auger sluice opening.

Turn wheel to desired flow rate.

(Sluice opening size can be “saved” by adjusting one of two sluice level indicators)



Treating seed with the Seed Treater.

Attention!

Before starting the treatment of seed, the seed treater must be calibrated. For calibration instructions see Liquid/powder treater user manual.

Before starting the treatment of seed, the seed treater must be clean and free from debris.

Plug electrical plug into wall socket.

Adjust the flow rate of the seed to the desired rate as determined by the calibration.

Switch on the liquid Inoculator, if needed, and set to desired setting determined by calibration.

Switch on the Powder Inoculator, if needed, and set to desired setting determined by calibration.

Fill the bin with seed.

Adjust height at the front end of the machine.

Place 25 kg seed bags over the seed outlet & switch to desired outlet.

When ready, switch on the feeder auger.

The liquid Inoculator or powder Inoculator must run in tandem as desired.

Monitor the level of the seed bag, when filled to desired level, switch over to empty seed bag.

Replace filled seed bag with a empty bag.

Keep seed bin topped up with untreated seed.

Attention!

Do not let auger run “dry” while treating seed as a wastage of treatment product will occur & the remaining seed will get an overdose of treatment.

Cleaning & Storing.

Cleaning

The recommended cleaning and maintenance work should be carried out at regular intervals in order to maintain operational reliability and guarantee optimum performance.

Cleaning of the Inoculators.

Refer to the user manuals of the inoculators for cleaning.

Cleaning of the feeder auger & auger tube

Unplug electrical plug from wall socket.

Place a tarp or a bag under the bottom of the access cap.

Open the access cap.

Once the large access cap is opened, be extremely careful not to place hands or fingers inside this area to avoid serious injuries.

Twist the handle of the feeder auger, pull to remove.

Clean access seed from auger tube.

Feeder auger alone could be cleaned by help of a pressure washer.

Clean the inside of the auger tube.

Access plate on other side of the seed intake bin can also be opened in case of a emergency or for cleaning.

Once the cleaning operation is completed, replace the auger and all the access caps or plates



Storing the implement

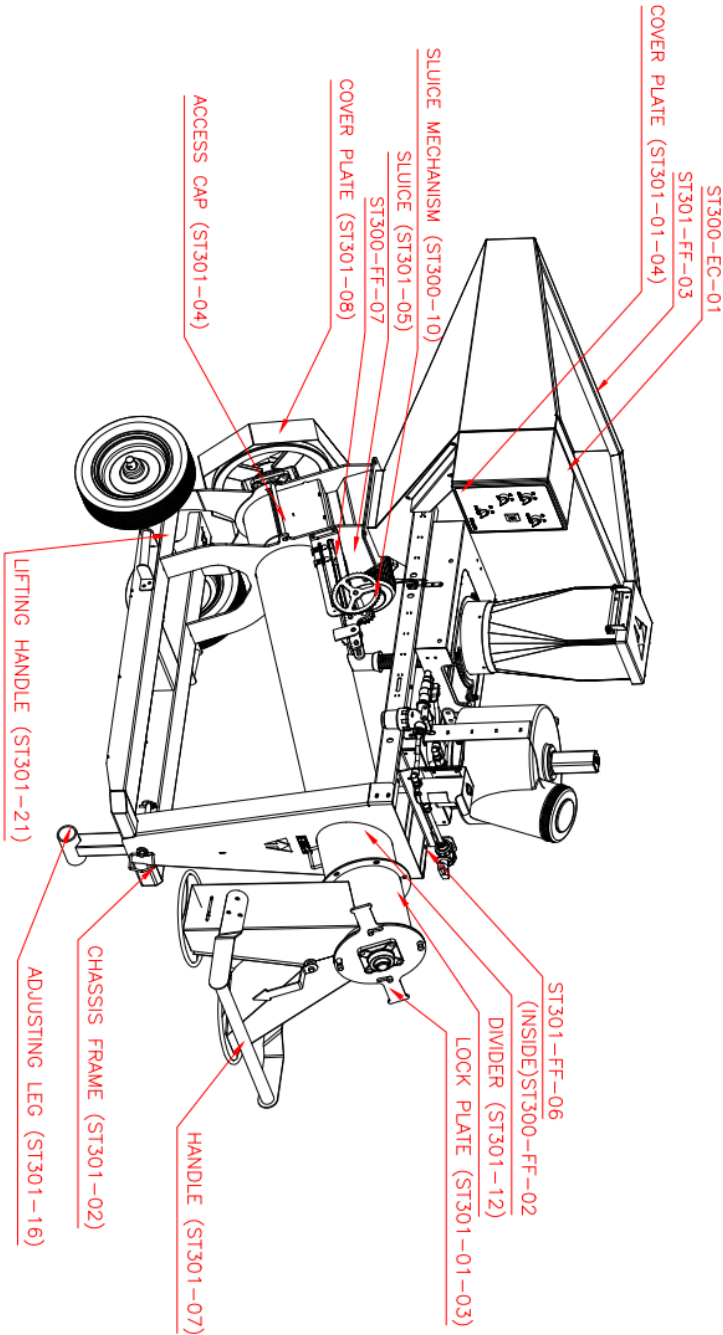
The seed treater should be stored under a roof so that no moisture can accumulate in the bin.

Park the implement on level and solid ground.

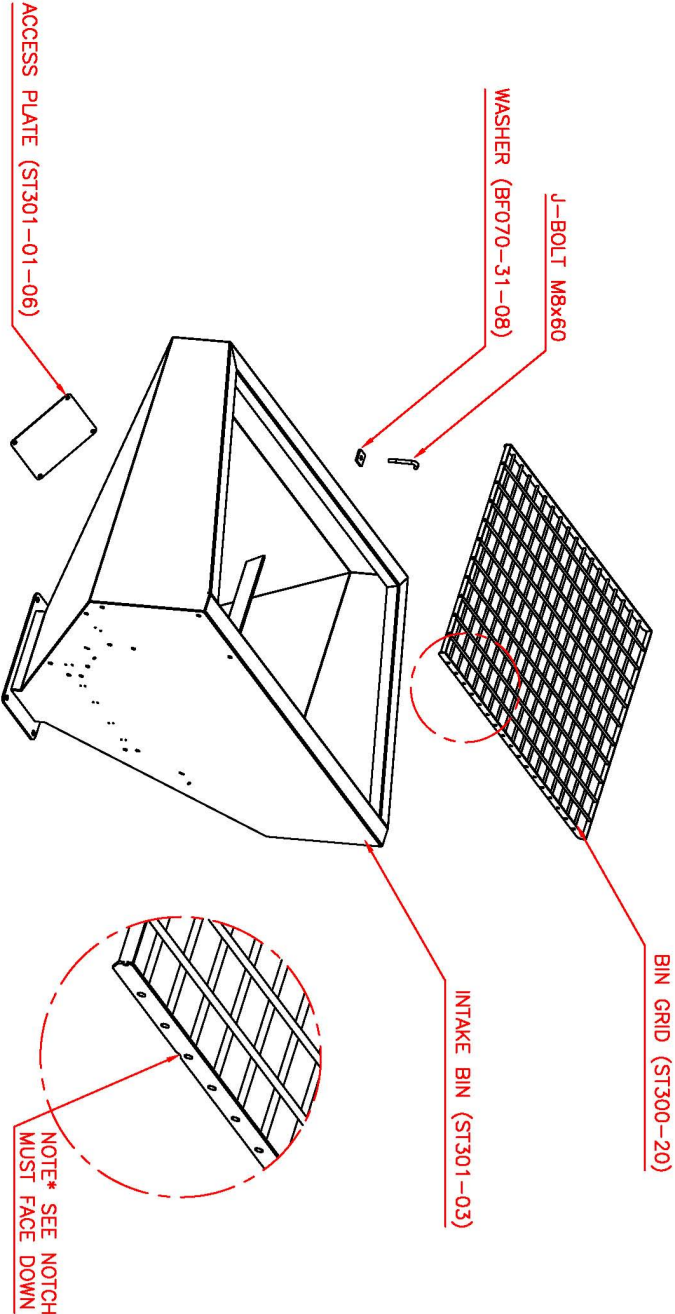
When stored for longer periods, it is recommended to open the auger sluice and access cap and to leave it open.

Take care to protect the implement against pest animals like rodents, mice and rats.

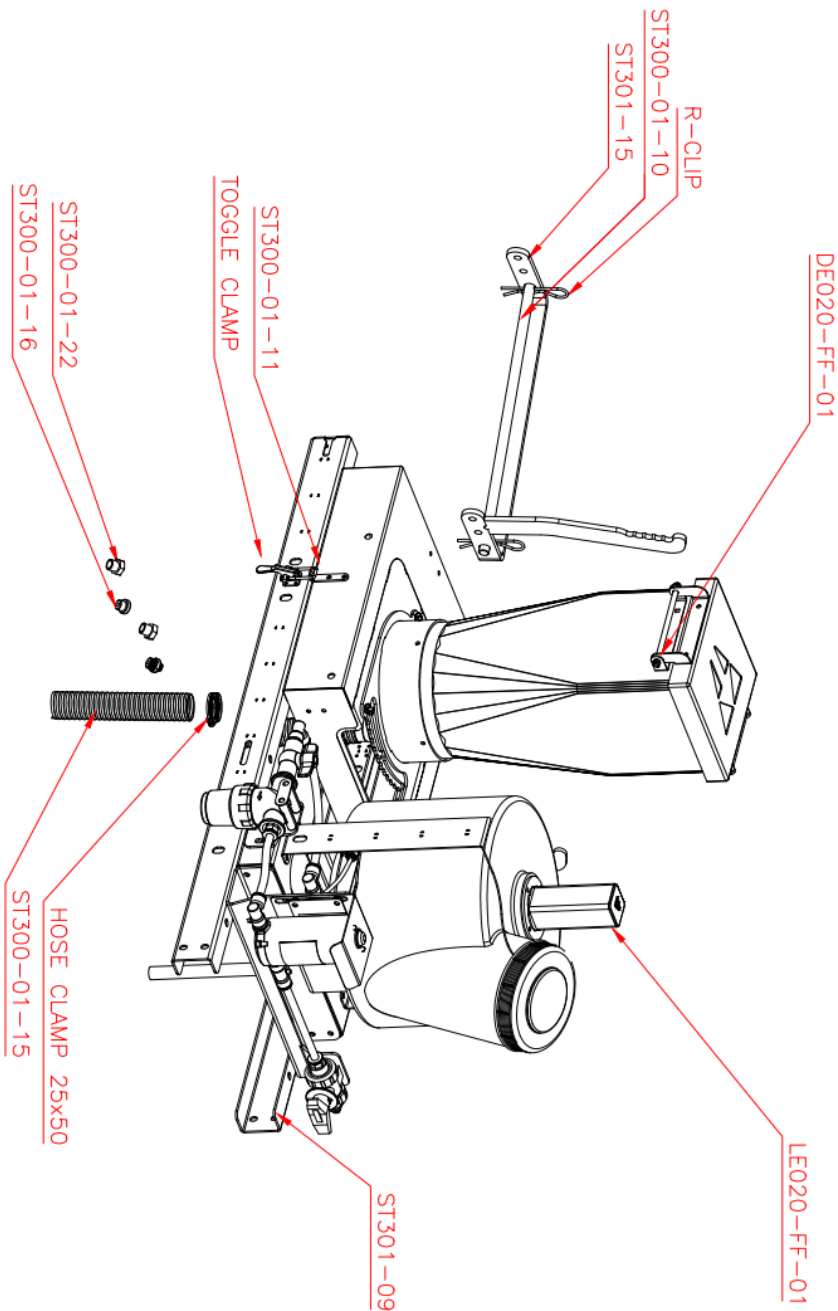
ST301-FF-01 Main Assembly.



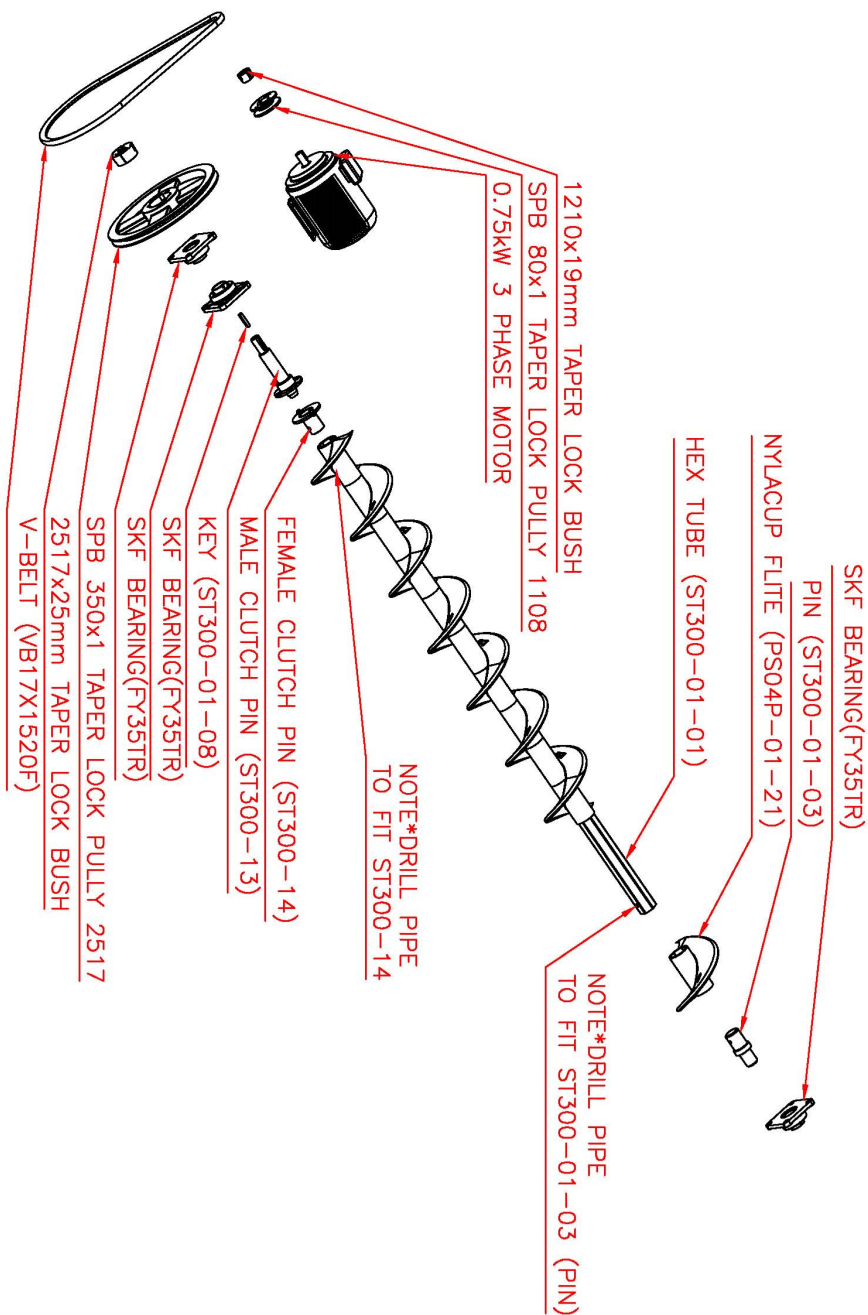
ST301-FF-03 Seed Intake Bin Assembly.



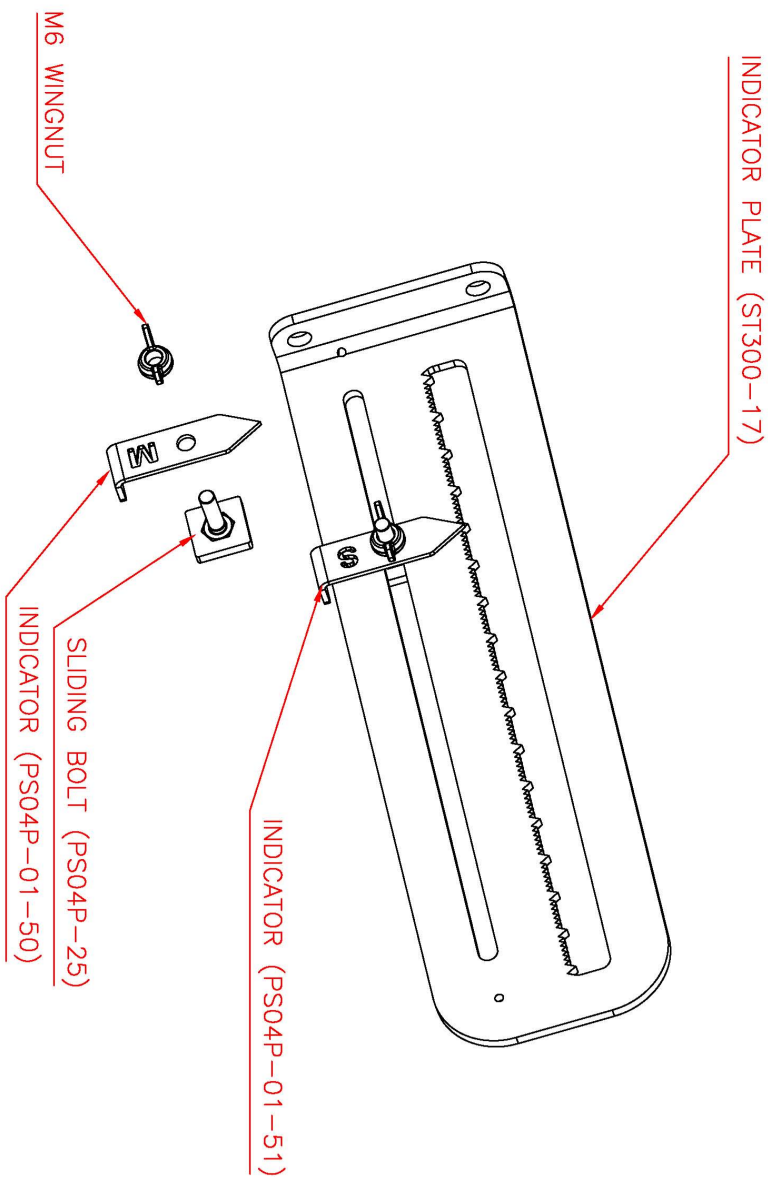
ST301-FF-06 treater Assembly.



ST300-FF-02 Feeder Auger Assembly.



ST300-FF-07 Indicator Assembly.



This page was left blank intentionally.



WARRANTY REGISTRATION

Dealer to complete and send to Info@agricad.co.za or fax to 0861001203

Implement:

Serial Number:

Dealer:

Customer Name:

Date of Sale:

Signature Client:

Dealer Stamp:

This implement carries a one year warranty on parts and workmanship under normal and intended use. This warranty is limited to the repair and/or replacement of defective parts.

No wear parts are covered under warranty.

This page was left blank intentionally.

Manufactured in South Africa

for African conditions by

AgriCAD Pty (Ltd)

www.agricad.co.za

Tel: 0861001204

For any assistance on



AgriCAD © copyright
all rights reserved